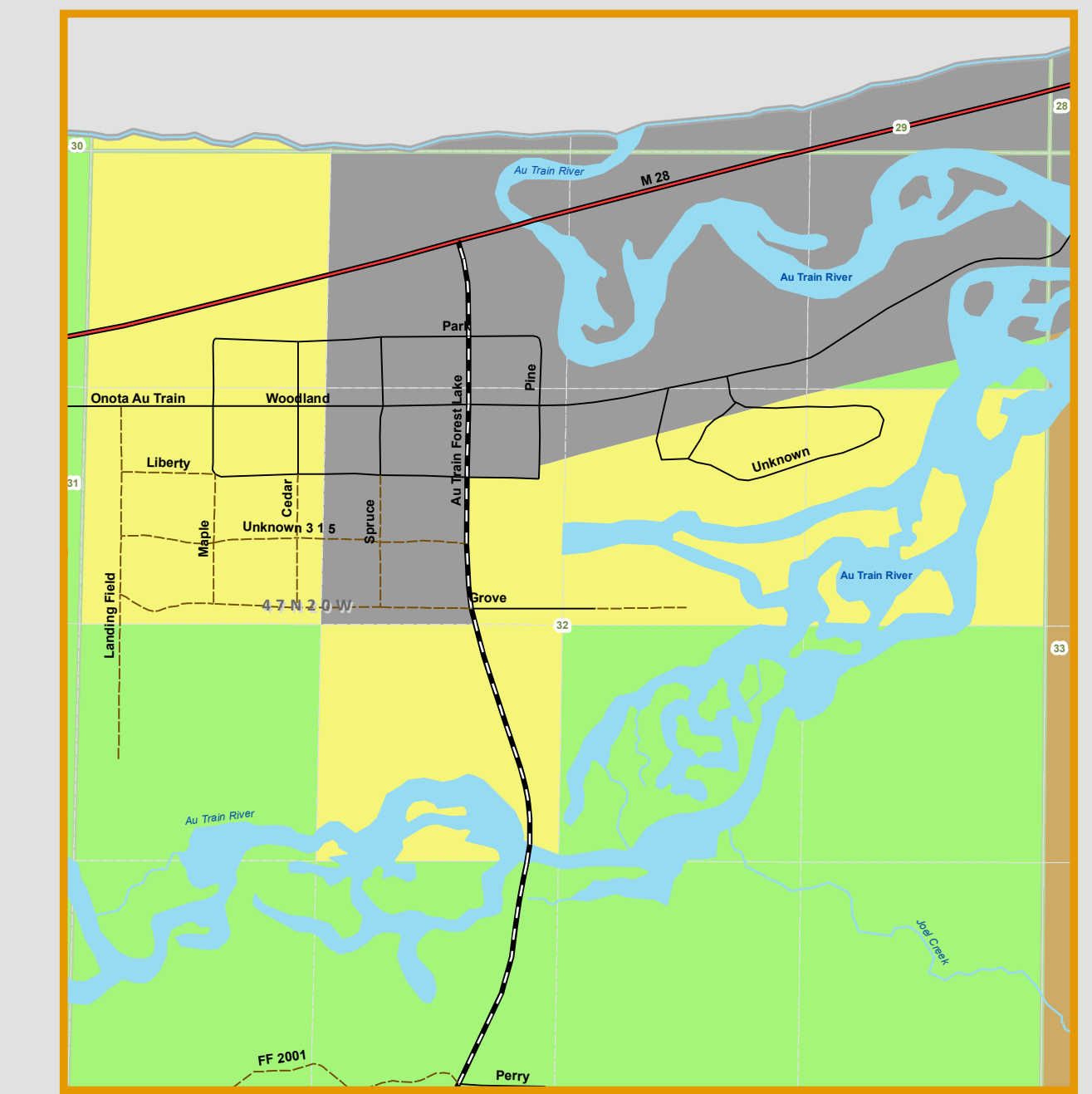
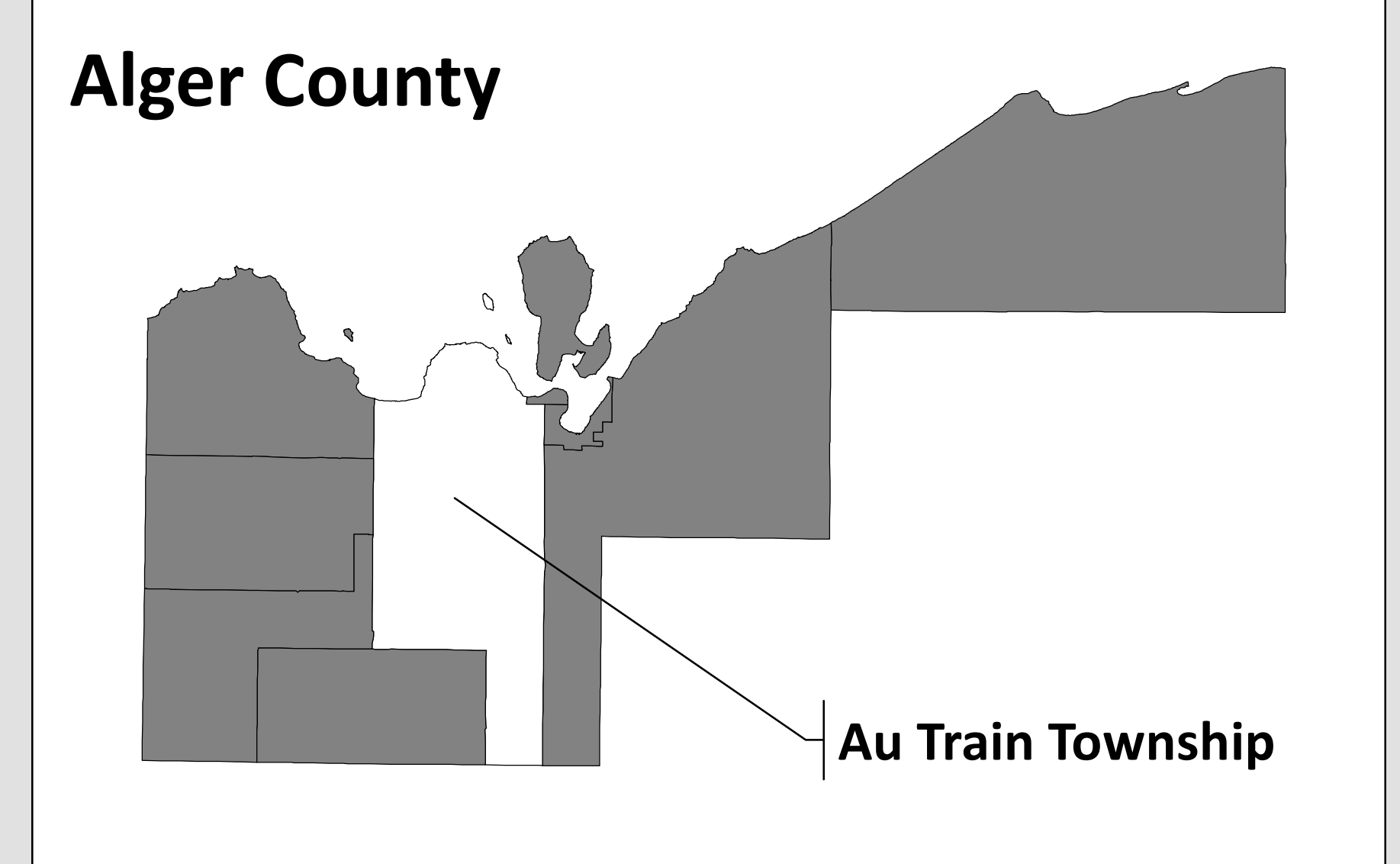
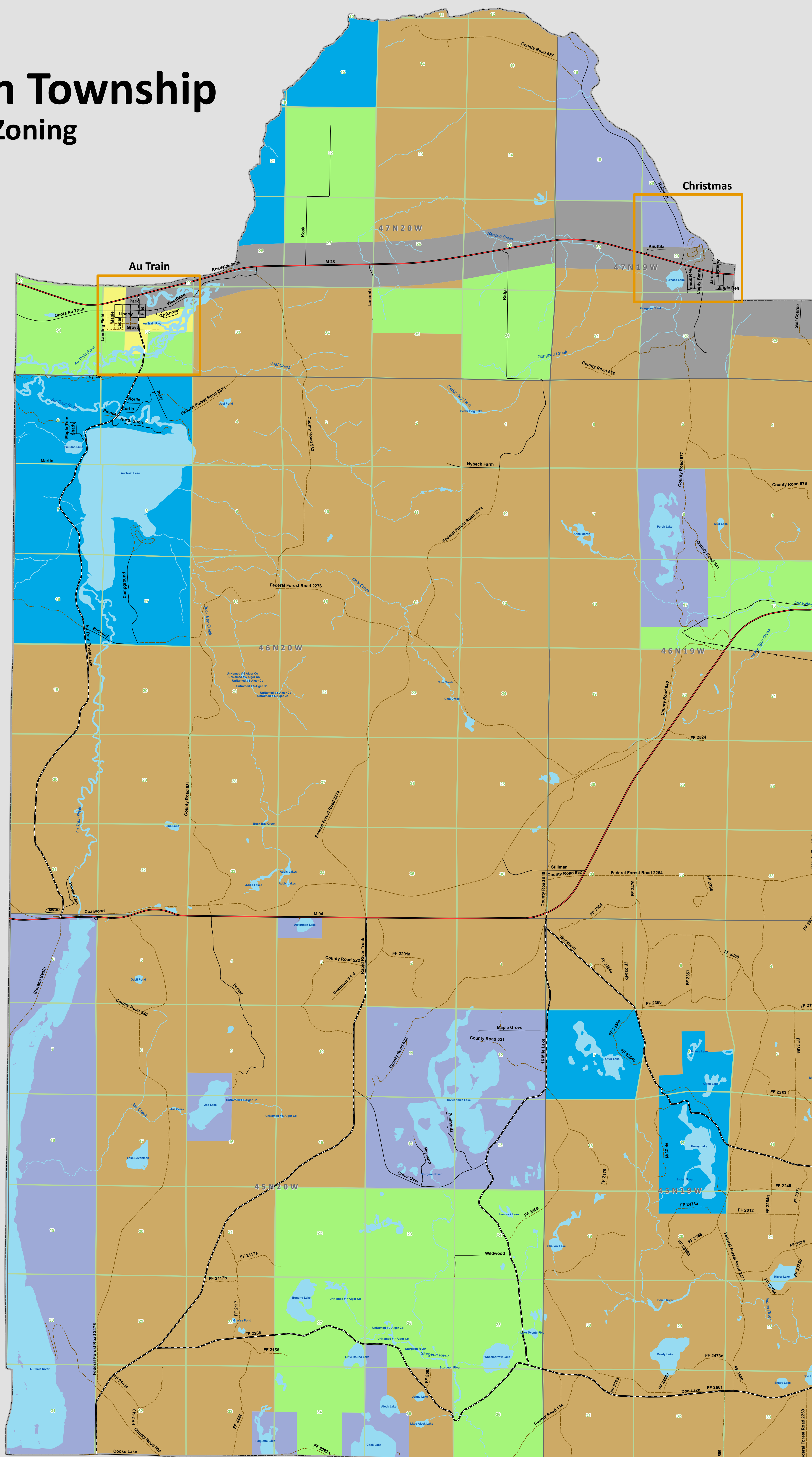


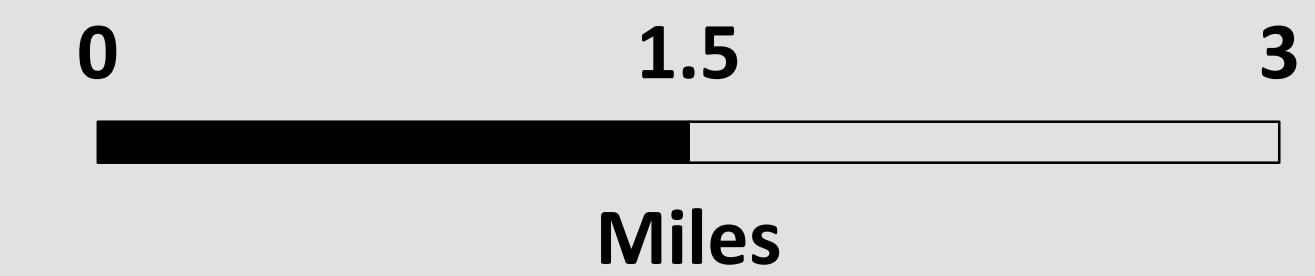
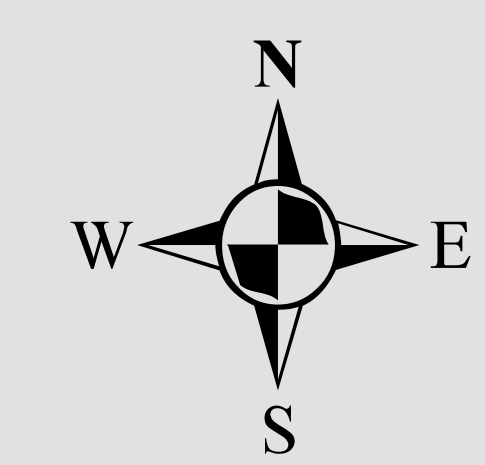
Au Train Township Zoning



Au Train



Christmas



- Roads**
- State Trunkline
 - County Primary
 - County Local
 - Not an Act 51 Certified Public Road
 - Rails
 - Township Boundary
 - Township and Range Lines
 - Section Lines
 - Rivers
 - Lakes

- Zoning**
- District**
- R-1/2, Residential One / Two
 - RR-1/2, Rural Residential One / Two
 - TD, Town Development
 - LS / R1, Lakeshore & River One
 - LS / R2, Lakeshore & River Two
 - T / RP, Timber/Resource Production
 - C, Commercial
 - M, Manufacturing

Au Train Township Zoning Map

Adopted: November 19, 2008
Effective: January 1, 2009
Amended with effective: August 13, 2012

This is to certify that this is the Official Zoning Map for the Township of Au Train (Alger County) as adopted by the Au Train Township Board on November 19, 2008.

Tom Balmes,
Supervisor

Mary F. Rogers,
Clerk

"The information and data provided herewith has been compiled from various sources, and is used by the CUPPAD Regional Commission for its own general purposes. CUPPAD does not warrant or guarantee that this information and data is accurate or current, nor does CUPPAD warrant or guarantee that this information and data is fit for any particular use or purpose. More specifically, CUPPAD warns that this information and data is not intended to be, and should not be, used to determine individual ownership, lot lines, or lines of occupation with respect to real estate. Any recipient of this information and data should independently verify its accuracy before relying on it for any purpose. CUPPAD and its officers, agents, employees, boards, and commissions shall not be liable for any inaccuracy or omission in this information and data"

